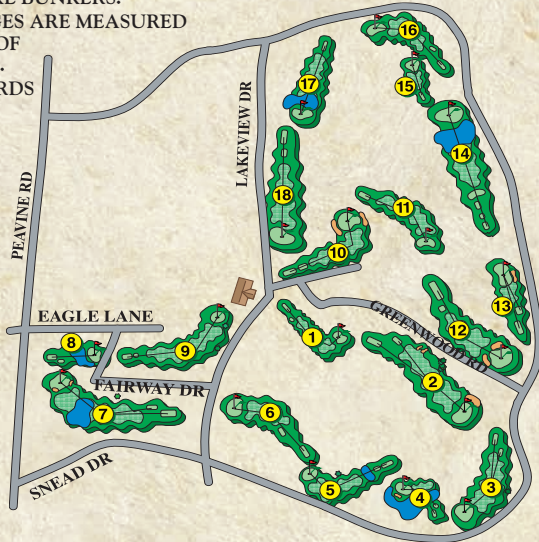


- * FIX BALL MARKS, REPLACE DIVOTS. RAKE BUNKERS.
- * ALL YARDAGES ARE MEASURED TO CENTER OF THE GREENS.
- * 100 & 150 YARDS MARKED BY POSTS

PIN LOCATION

- ▲ Back
- ▼ Middle
- ▶ Front



GENERAL RULES

- ◆ USGA Rules govern all play except where modified by Local Rules.
- ◆ **KEEP PACE WITH GROUP AHEAD. SLOWER GROUPS WILL BE ASKED TO SKIP A HOLE - RANGERS IN AUTHORITY.**
- ◆ Valid driver's license required for operation. Damage is responsibility of operator.
- ◆ Two riders only per cart.
- ◆ **NO PRIVATE COOLERS ALLOWED.** Outside food and beverage is not permitted.
- ◆ Each player must have own set of clubs.
- ◆ Proper golf attire required at all times.
- ◆ Lightning/Storms: Please leave course at first sign; restrooms/shelters located at #6 tee and #14 tee.

Men's Rating/Slope

Blue 71.1/120
 White 69.2/117
 Yellow 65.6/109
 Red 64.8/108
 Green 60.8/103

Women's Rating/Slope

White 73.9/128
 Yellow 69.9/121
 Red 69.4/115
 Green 62.3/106



Druid Hills

-1970-

435 LAKEVIEW DR.
 FAIRFIELD GLADE, TENNESSEE 38558

PRO SHOP: (931) 484-3711
 CENTRAL TEE TIMES: (931) 484-3729 OR
 1 (800) 624-8755

TEETIMES@FAIRFIELDGLADE.CC

WWW.FAIRFIELDGLADE.CC



HOLE	1	2	3	4	5	6	7	8	9	OUT	P	10	11	12	13	14	15	16	17	18	IN	TOT	HCP	NET
BLUE	341	520	382	177	392	362	538	151	394	3257	L	318	302	388	219	519	147	330	325	465	3013	6270		
WHITE	309	481	370	164	344	343	514	141	376	3042	A	307	282	357	196	478	136	317	290	422	2785	5827		
YELLOW	292	410	316	144	317	241	422	111	294	2547	Y	273	256	338	139	435	116	269	282	376	2484	5031		
RED	285	390	307	134	317	230	414	108	241	2426	E	257	239	333	128	428	114	259	232	373	2363	4789		
GREEN	164	317	231	134	207	230	325	108	176	1892	R	192	190	252	128	315	114	178	232	245	1846	3738		
PAR	4	5	4	3	4	4	5	3	4	36		4	4	4	3	5	3	4	4	5	36	72		
MEN'S HCP	13	7	15	11	3	9	5	17	1			18	10	16	8	6	14	4	12	2				
LADIES' HCP	5	7	15	11	3	13	1	17	9			14	10	8	18	2	16	12	4	6				

DATE: _____ SCORER: _____ ATTEST: _____